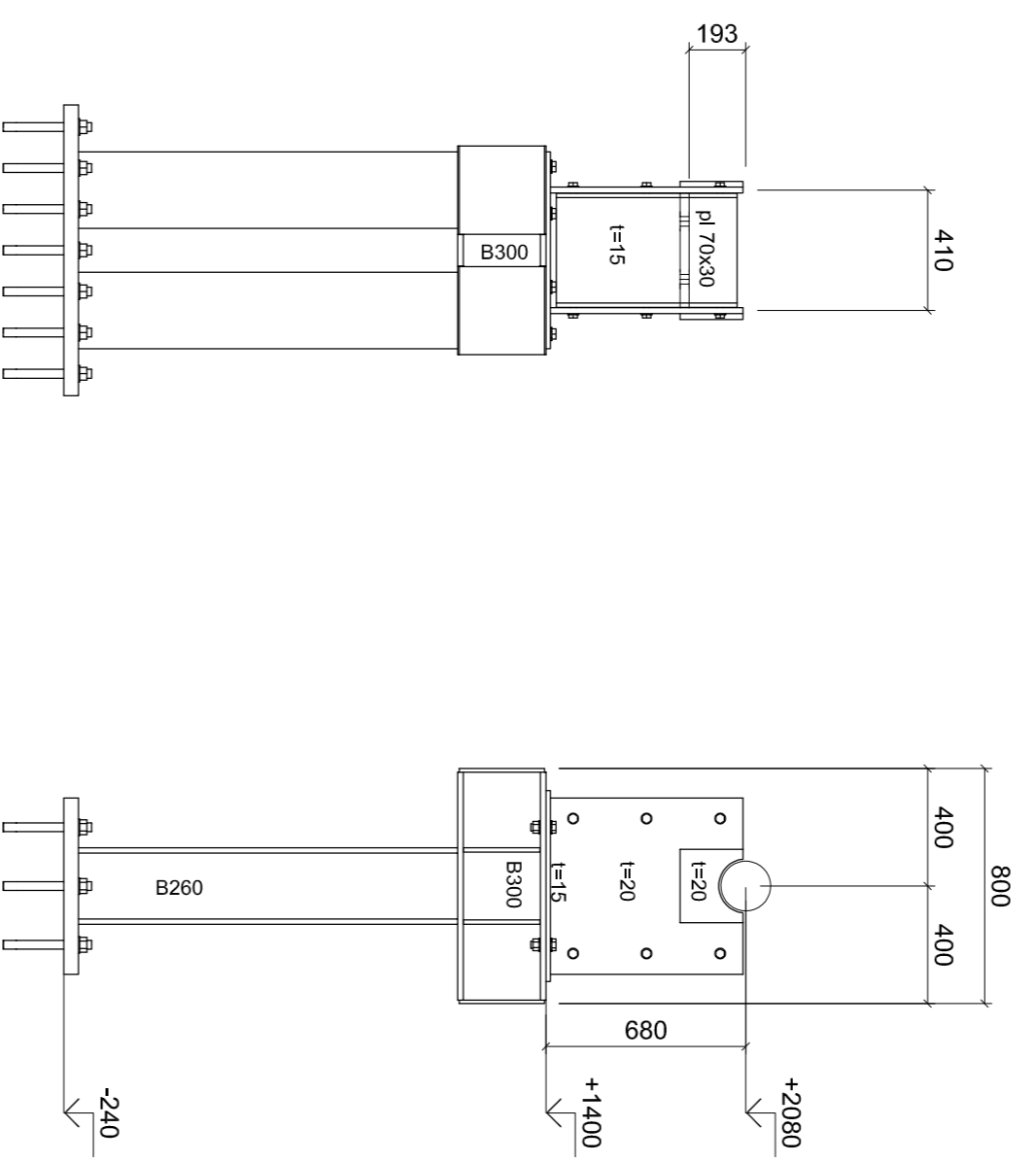
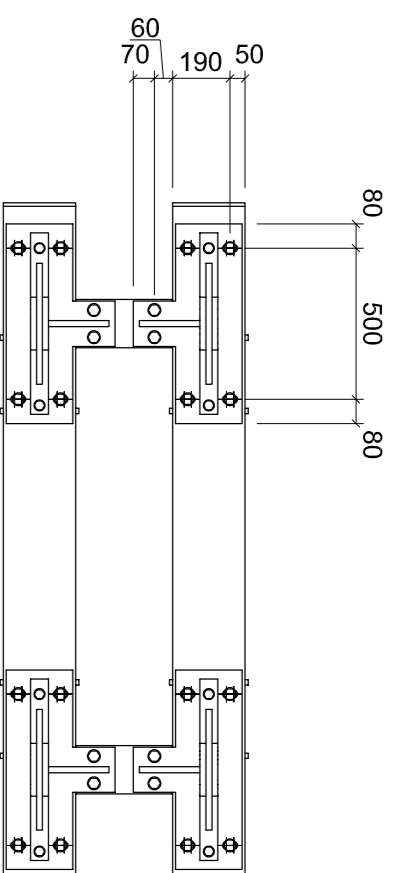


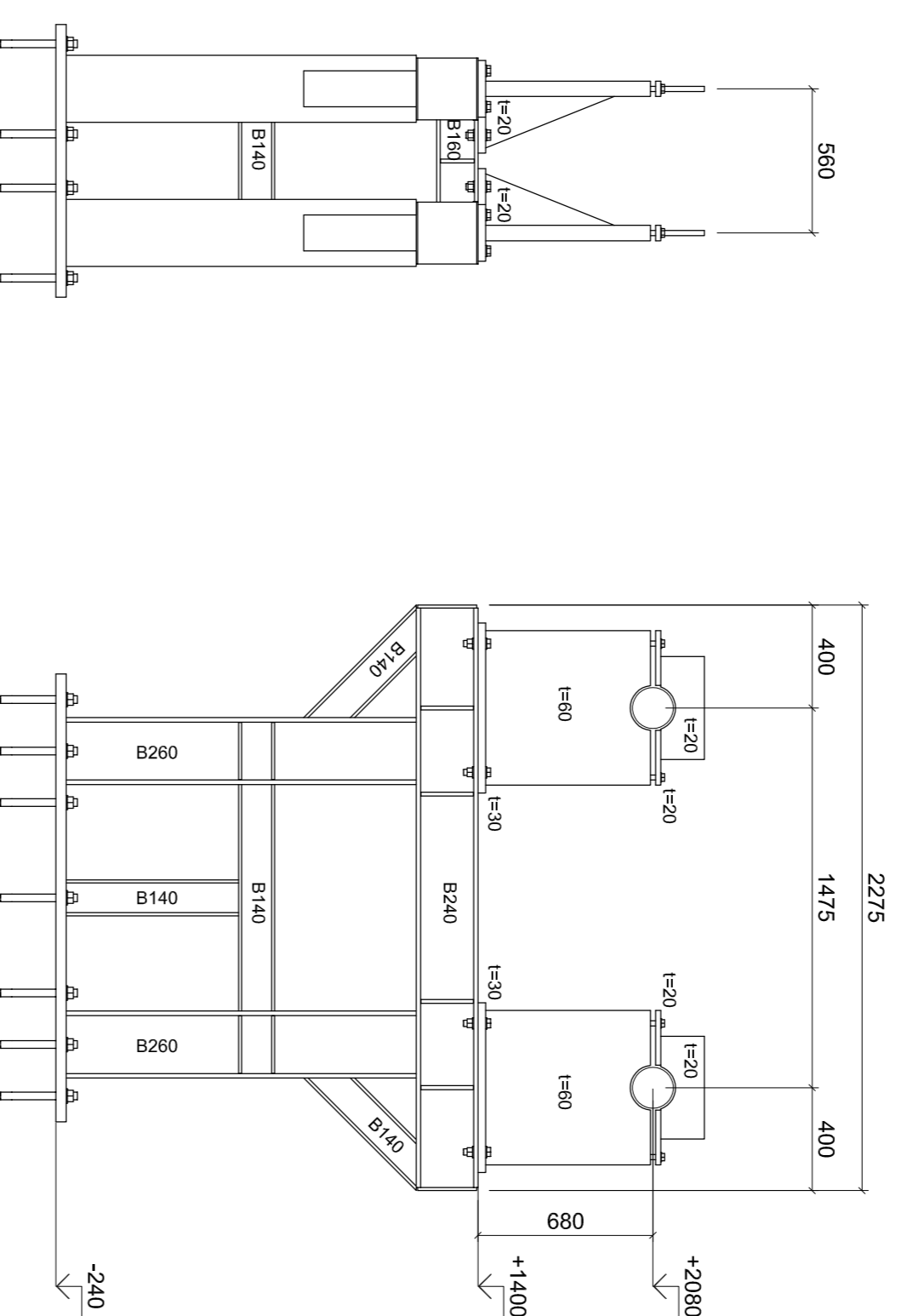
-diameter as: 166mm
-staalvilt 8mm



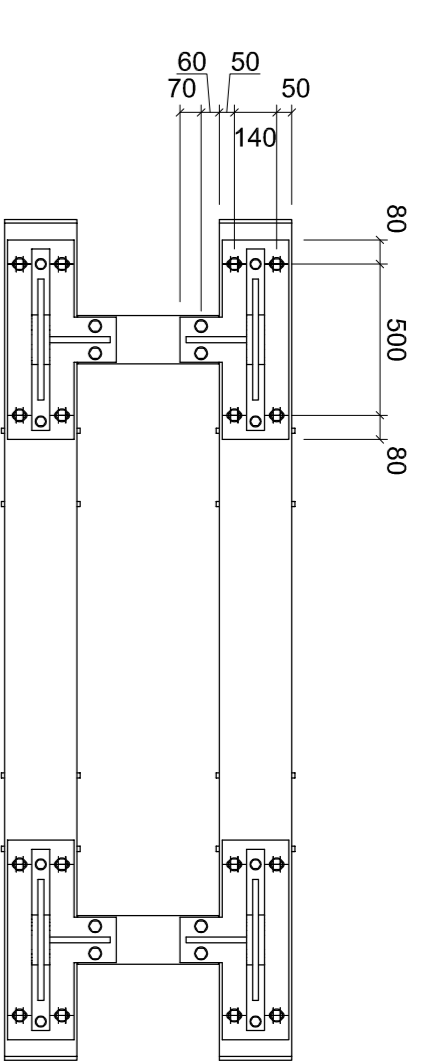
NOSE GEAR (1x)



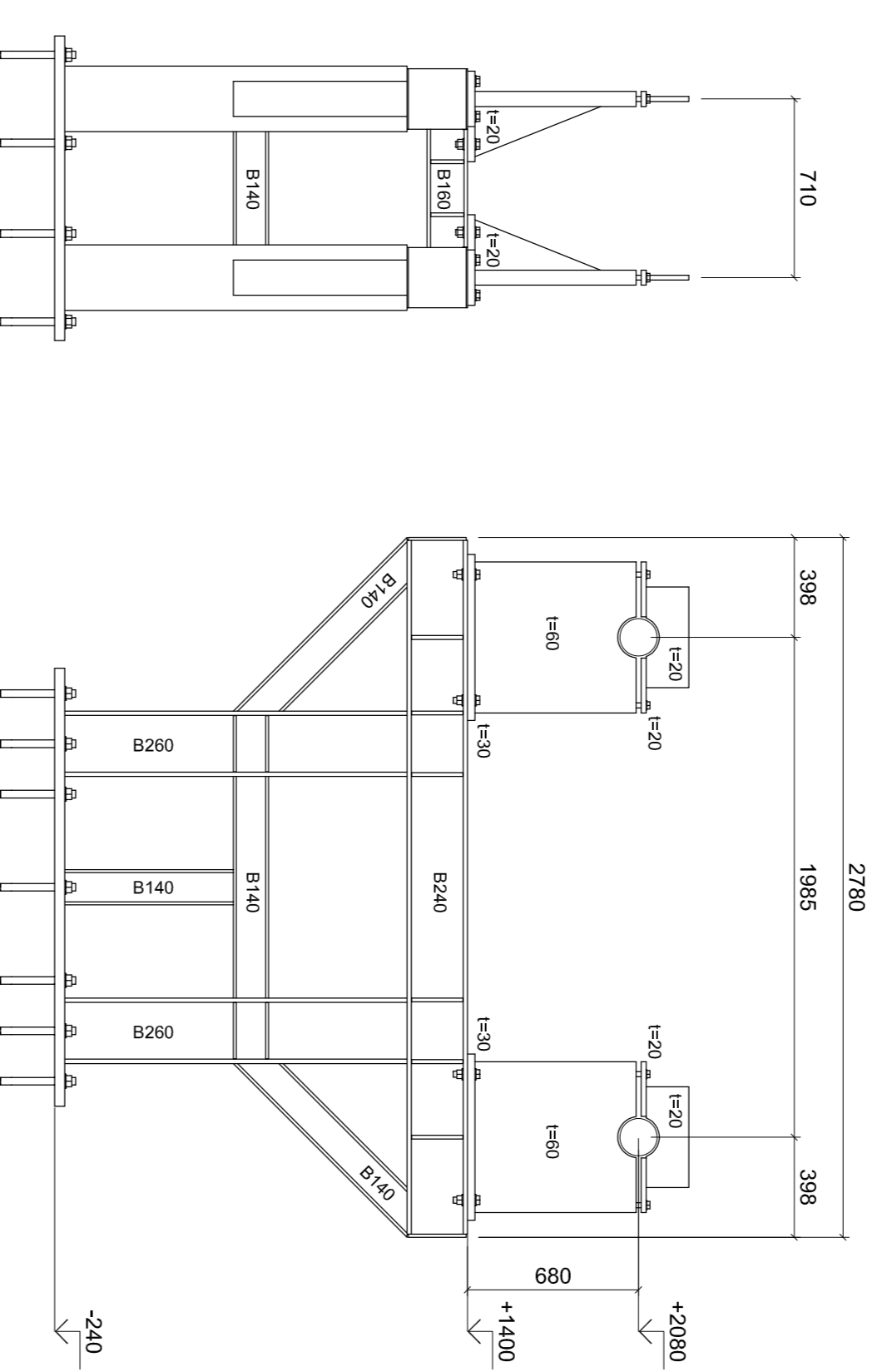
-diameter ass: 158mm
-staalvilt 8mm



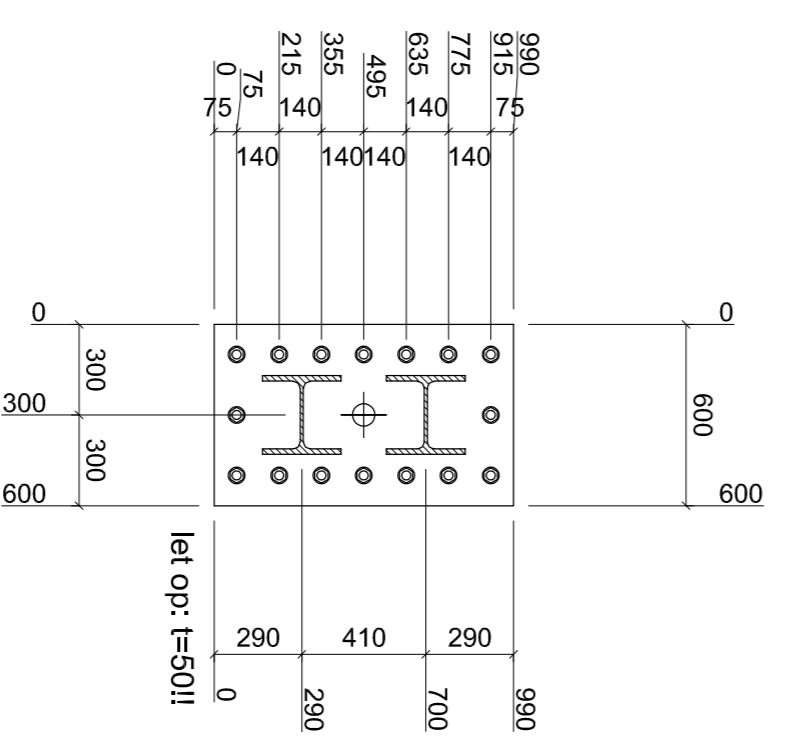
WING GEAR (2x)



-diameter assen: uitgegaan van ± 150 mm
-staalvilt 8mm

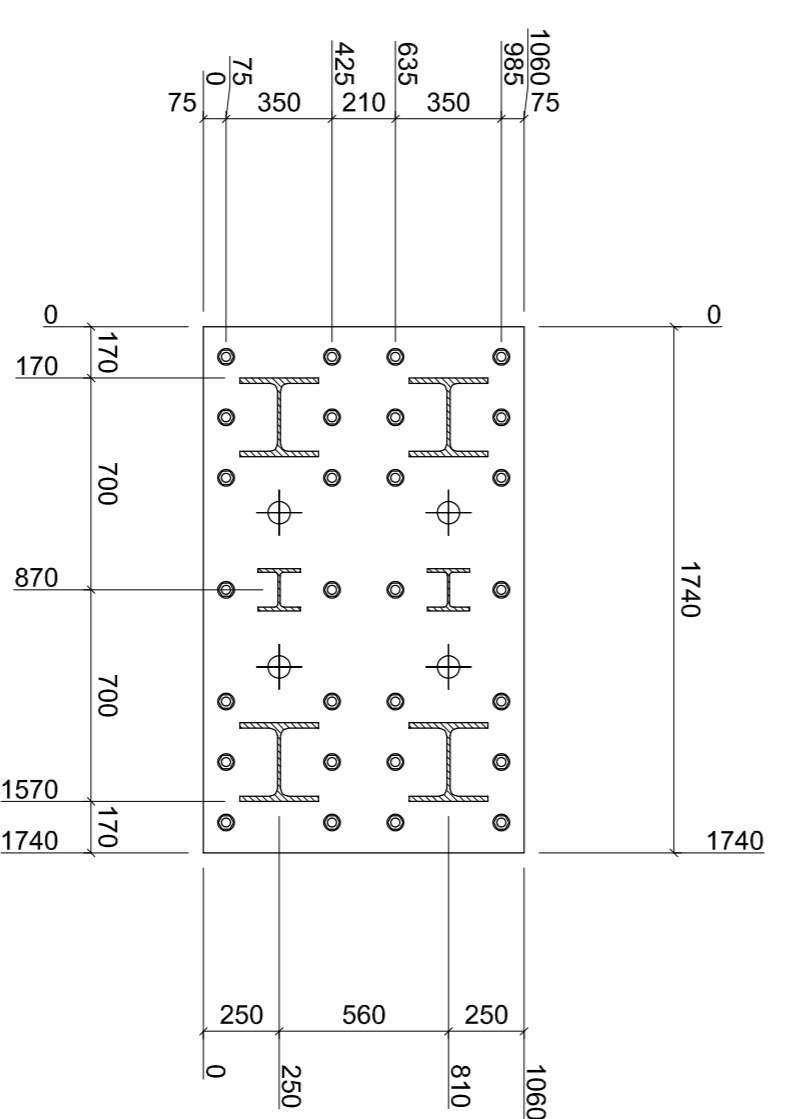


BODY GEAR (2x)



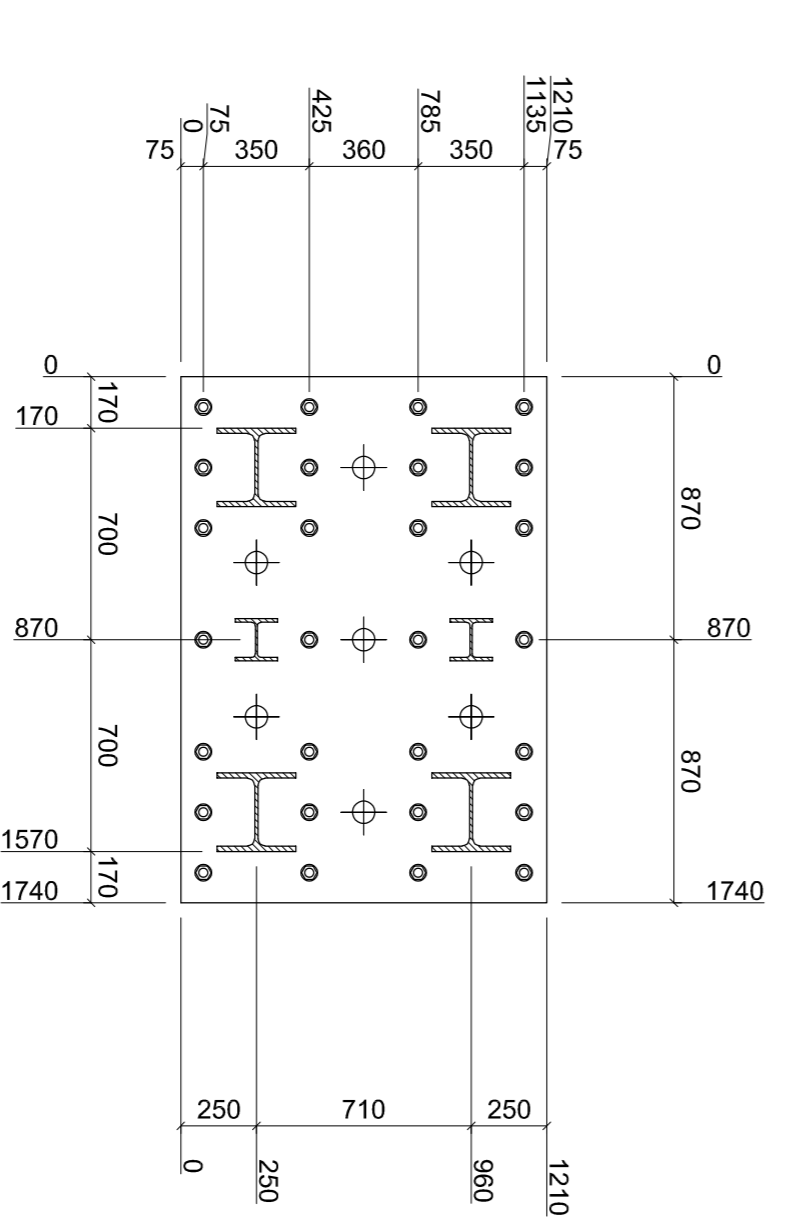
voetplaat aanzichten

-voetplaten $t = 40$ (tenzij anders aangegeven)
-gaten $\varnothing 36$ t.b.v. ankers M30
-gaten $\varnothing 75$ t.b.v. aangieten voetplaten



ANKERS en BOUTEN

-ankers: Hilti HIT-HY 200-A + HIT-V M30(8.8) inboordiepte 600mm
-bouten dragers op sokkel: M24 (8.8)
-bouten askappen: M20 (8.8)
-bouten tussenschotten nose gear dragers: M20 (8.8)



OPPERVLAKTEBEHANDELING
-thermisch verzinkt

MATERIAALKWALITEIT
-materiaal sokkels: S235
-materiaal dragers: S355